

The Restyled

Dynamix Ankle Foot Orthoses Range



Supporting your wellbeing



Index

Product Range Introduction	3
Puffin - Dynamix Supramalleolar	4
Penguin - Dynamix Plantarflexion	6
Pelican - Dynamix Hinged	8
Fitting Guidelines	10



Product Range Introduction

Introducing our restyled prefabricated 'off-the-shelf' Dynamix Ankle Foot Orthoses range. Manufactured using flexible thermoplastics and aesthetically pleasing unisex micro-Velcro closure systems.

Our biomechanical devices help maintain the foot and ankle complex in a corrected position. They can be used to align, stabilise and correct malalignments and other foot and ankle deformities commonly associated with paediatric foot disorders.

The range incorporates 3 design variants (Puffin, Penguin & Pelican) which are all available next working day and can be easily measured and fitted in clinic.



Puffin - Dynamix Supramalleolar



Penguin - Dynamix Plantarflexion
(Standard or Extended)



Pelican - Dynamix Hinged



Puffin – Dynamix Supramalleolar

Product Ref: P1196



Features:

- Two shell dynamic orthosis with a supramalleolar design made from low density polyethylene and polypropylene.
- Soft internal shell surrounds the tibial and fibular malleoli, encompassing the entire plantar surface and midfoot region.
- A rigid skeletal external shell serves to reinforce the alignment applied by the orthosis.
- Midfoot Velcro closure system ensures appropriate fitting with straps that can be cut to desired length.
- Adhesive Velcro patches are included that can be placed between the two shells to prevent any movement.
- Optional comfort pads for the toe and dorsal midfoot regions are also included.
- Lightweight, trimmable and adjustable.
- Latex Free.

Benefits:

- Allows free plantar and dorsal flexion.
- Realigns the entire foot and supports the medial longitudinal arch.
- Facilitates the development of fundamental movement patterns for a more natural gait.
- Stabilisation of the foot improving all phases of the gait cycle.
- Low profile design for ease of accommodation in patient's footwear.
- Prefabricated for instant use, sized by simple foot measurement and competitively priced.

Indications for use:

- Moderate to severe pronation or supination
- Instability in the subtalar joint, midfoot and forefoot
- Severe flat foot
- Lack of coordination or balance



*Puffin sticker included with each orthosis

Ordering Information

- All sizes are stocked in left and right and are available as singles or pairs. Please state clearly when ordering a pair.
- All items are available next working day when ordered before 3pm.
- Consignment stocks are available upon request.

Size	Foot Length (cm)	Height (cm)	Puffin - Product Code		Fitting Guide
			Left	Right	
1	12.5	7.9	P1196/L/1	P1196/R/1	
2	13.5	8.3	P1196/L/2	P1196/R/2	
3	14	8.6	P1196/L/3	P1196/R/3	
4	15	9	P1196/L/4	P1196/R/4	
5	16	9.4	P1196/L/5	P1196/R/5	
6	17.5	9.8	P1196/L/6	P1196/R/6	
7	19	10.2	P1196/L/7	P1196/R/7	
8	21	10.8	P1196/L/8	P1196/R/8	

When fitting it is recommended to choose a size that leaves approximately 1cm of space between the end of the orthosis and the foot.

☎ 029 2037 0696

☎ 029 2037 0697

✉ enquiries@orthotix.co.uk

🌐 www.orthotix.co.uk

paediatric
Orthopaedic Products Designed For Children



Penguin - Dynamix Plantarflexion

Product Ref: P1195 / P1198



Features:

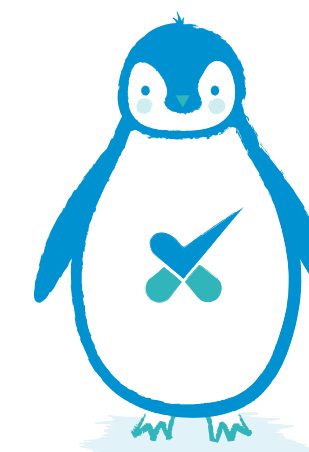
- Two shell dynamic orthosis available with standard or extended calf cuff. Made from low density polyethylene and polypropylene.
- Soft internal shell which extends from mid/top of calf, encompassing the entire plantar surface of the foot.
- A rigid skeletal external shell serves to reinforce the alignment applied by the orthosis, which reaches the proximal edge of the metatarsal heads.
- Midfoot Velcro closure system ensures appropriate fitting with straps that can be cut to desired length.
- Adhesive Velcro patches are included that can be placed between the two shells to prevent any movement.
- Velcro strap on the upper cuff can be removed to allow free dorsal flexion.
- Optional comfort pads for the toe and dorsal midfoot regions are also included.
- Lightweight, trimmable and adjustable.
- Latex free.

Benefits:

- Limits plantarflexion enabling better foot clearance during swing phase.
- Controlled dorsiflexion and plantar flexion.
- Stabilisation of the foot which improves all phases of the gait cycle.
- Supports the medial longitudinal arch.
- Improved control of postural movements and balance in stance and gait.
- Low profile design for ease of accommodation in patient's footwear.
- Prefabricated for instant use, sized by simple foot measurement and competitively priced.

Indications for use:

- Dorsiflexion weakness in swing phase
- Hyperextension of the knee
- Incapacity or weakness of plantar flexion and/or dorsiflexion
- Excessive plantar flexion (toe walking)
- Instability as a result of low or high muscle tone
- Lack of coordination or balance



*Penguin sticker included with each orthosis

Ordering Information

- All sizes are stocked in left and right and are available as singles or pairs. Please state clearly when ordering a pair.
- All items are available next working day when ordered before 3pm.
- Consignment stocks are available upon request.

Size	Foot Length (cm)	Height (cm)	Penguin Standard - Product Code		Fitting Guide
			Left	Right	
1	12.5	12.2	P1195/L/1	P1195/R/1	
2	13.5	12.7	P1195/L/2	P1195/R/2	
3	14	13.5	P1195/L/3	P1195/R/3	
4	15	14.5	P1195/L/4	P1195/R/4	
5	16	15.5	P1195/L/5	P1195/R/5	
6	17.5	17	P1195/L/6	P1195/R/6	
7	19	18.5	P1195/L/7	P1195/R/7	
8	21	20.5	P1195/L/8	P1195/R/8	

Size	Foot Length (cm)	Height (cm)	Penguin Extended - Product Code		Fitting Guide
			Left	Right	
1	12.5	16.5	P1198/L/1	P1198/R/1	
2	13.5	17.4	P1198/L/2	P1198/R/2	
3	14	18.3	P1198/L/3	P1198/R/3	
4	15	19.2	P1198/L/4	P1198/R/4	
5	16	20.7	P1198/L/5	P1198/R/5	
6	17.5	22.2	P1198/L/6	P1198/R/6	
7	19	24	P1198/L/7	P1198/R/7	
8	21	26	P1198/L/8	P1198/R/8	

When fitting it is recommended to choose a size that leaves approximately 1cm of space between the end of the orthosis and the foot.



Pelican - Dynamix Hinged

Product Ref: P1197



Features:

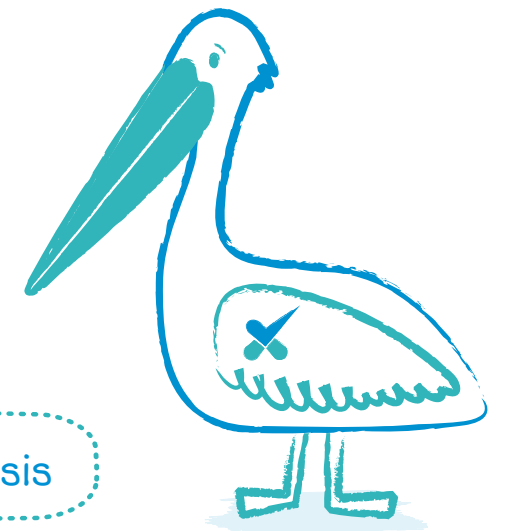
- Single shell dynamic orthosis made from low density polyethylene.
- Shell surrounds the tibial and fibular malleoli and comes into contact with the entire plantar surface, featuring a hinged ankle joint which enables the adjustment of dorsiflexion limit.
- Polyethylene foam is used to line the hinged region offering enhanced comfort and protection to the malleoli.
- Shell extends from mid calf to the proximal edge of the metatarsal heads.
- Midfoot Velcro closure system ensures appropriate fitting with straps that can be cut to fit.
- Optional comfort pads for the toe and the dorsal midfoot regions are also included.
- Lightweight, trimmable and adjustable.
- Latex free.

Benefits:

- Controls plantarflexion and toe walking.
- Realigns entire foot and supports the medial longitudinal arch.
- Facilitates the development of fundamental movement patterns for a more natural gait.
- Increased control of knee hyperextension.
- Ankle angle can be adjusted using posterior screw.
- Low profile design for ease of accommodation in patient's footwear.
- Prefabricated for instant use, sized by simple foot measurement and competitively priced.

Indications for use:

- Incapacity or weakness of dorsiflexion
- Excessive plantar flexion
- Hyperextension of the knee
- Instability as a result of low or high muscle tone
- Lack of coordination or balance



*Pelican sticker included with each orthosis

Ordering Information

- All sizes are stocked in left and right and are available as singles or pairs. Please state clearly when ordering a pair.
- All items are available next working day when ordered before 3pm.
- Consignment stocks are available upon request.

Size	Foot Length (cm)	Height (cm)	Pelican - Product Code		Fitting Guide
			Left	Right	
1	12.5	12.2	P1197/L/1	P1197/R/1	
2	13.5	12.7	P1197/L/2	P1197/R/2	
3	14	13.5	P1197/L/3	P1197/R/3	
4	15	14.5	P1197/L/4	P1197/R/4	
5	16	15.5	P1197/L/5	P1197/R/5	
6	17.5	17	P1197/L/6	P1197/R/6	
7	19	18.5	P1197/L/7	P1197/R/7	
8	21	20.5	P1197/L/8	P1197/R/8	

When fitting it is recommended to choose a size that leaves approximately 1cm of space between the end of the orthosis and the foot.

📞 029 2037 0696

📠 029 2037 0697

✉ enquiries@orthotix.co.uk

🌐 www.orthotix.co.uk

paediatric
Orthopaedic Products Designed For Children

Fitting Guidelines

It is advisable to fit our range of products with the patient seated if possible

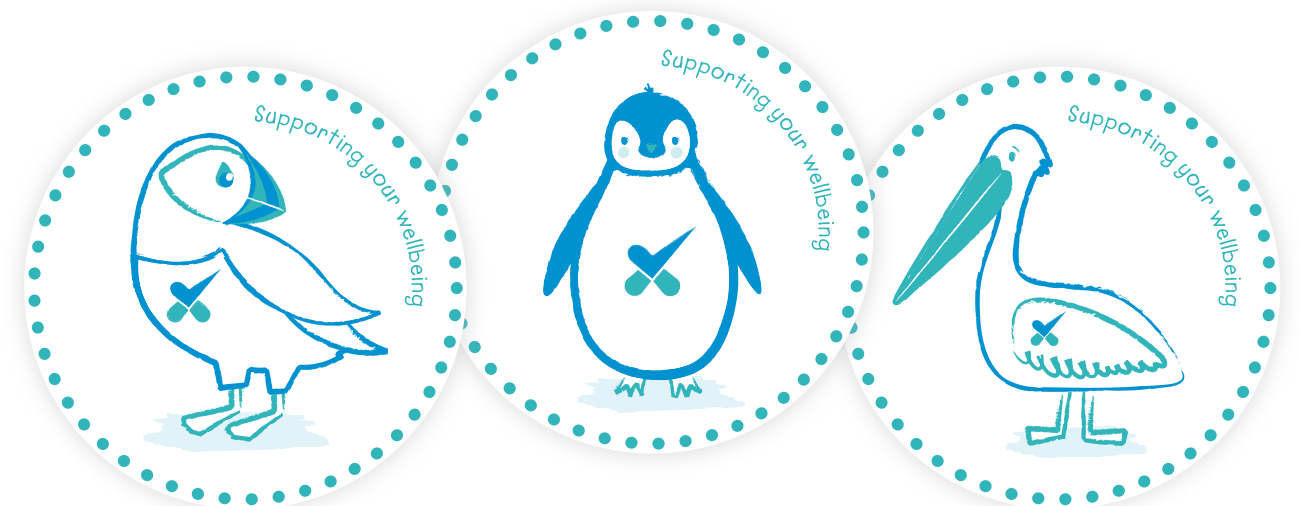
1. Place an interface over the patient's skin (sock or stocking).
2. Insert the foot in the orthosis by opening the sides that surround the dorsal midfoot.
3. Ensure the heel and plantar surface come into contact with the base of the orthosis.
4. Position the protective pad for the dorsal midfoot by slightly opening the sides of the orthosis that surround the dorsal midfoot.
5. Without removing the backing, place the toe pad under the toes and mark the cuts to be made so that the pad ends up level with the distal edge of the orthosis. Peel off the backing and stick the pad.
6. Adjust the length of the straps. Cut them if necessary.
7. Fasten the orthosis using the velcro system then place into the child's shoe.

Adjusting the dorsiflexion limit of the Pelican Hinged model:

Using a 3mm hex key, turn the screw anti-clockwise to increase the dorsiflexion angle.



*Stickers are available for a limited time only



Other products now available



Tibiofemoral Double De-Rotation Orthosis / Plantar Fasciitis Splint / Head Protex Soft Shell Helmet

paediatric
Orthopaedic Products Designed For Children

Distributed by:

ORTHOTIX
SPORTS & ORTHOPAEDIC BRACING

Contact us for a copy of our paediatric product catalogue:

Dacey Ltd T/A Orthotix
Sanatorium Road, Canton,
Cardiff, CF11 8DG

T: 029 2037 0696 | F: 029 2037 0697

E: enquiries@orthotix.co.uk

www.orthotix.co.uk

Follow us on:

