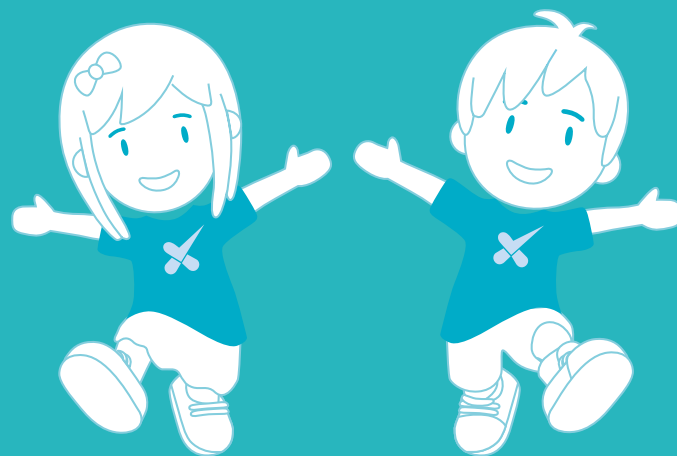


ORTHOTIX
SPORTS & ORTHOPAEDIC BRACING



paediatric
Orthopaedic Products Designed For Children





Supporting your wellbeing

WWW.ORTHOTIX.CO.UK

paediatric 
Orthopaedic Products Designed For Children



Orthotix was established in 2004 and is now the leading sports and orthopaedic bracing business in Wales.

In recent years our portfolio of products has expanded to also include innovative and competitively priced paediatric consumables.

Our in-house team of healthcare professionals have compiled a collection of orthopaedic bracing specifically designed for common childhood injuries and conditions with functionality, comfort and aesthetics in mind.

Many of these products are now supplied to some of the most prestigious childrens hospitals in the UK.

Our products are CE marked in line with the European Council Directive 93/42/EEC and we are also a registered member of the British Healthcare Trades Association.

To view our complete range of products and to learn more about us please visit www.orthotix.co.uk

We are proud to be an official supplier of sports and orthopaedic bracing to the following organisations:



Customer Services

Our award winning Customer Service team are waiting to assist you with any product related queries and ordering, so please contact them; Monday – Friday, between the hours of 9am – 5pm. Please note that any orders requiring next working day delivery will need to be received by 3pm.

Outside of these working hours if you can leave a voice mail or email with your enquiry, a member of the team will get back to you as soon as possible.

All products are also available via our Webshop at www.orthotix.co.uk

Method of Despatch

Orders will be despatched by the most economical means available unless instructed otherwise. Options are:

- 2 - 3 working days (Standard Delivery)
- Next working day (Unspecified time)
- Next working day before 12:00 noon
- Scheduled delivery service if contracted

Incorrect Delivery

On receipt of the goods the customer is requested to check the consignment. In the unlikely event that the type or quantity of goods is incorrect then you are required to notify our Customer Services team within seven working days of the date of delivery.

Return of Goods Policy

Authorisation must be issued by Orthotix prior to goods being returned, please contact Customer Services for a returns reference and ensure a clear explanation is provided. Soiled, custom manufactured, modified, obsolete or goods delivered more than three months previously may not be returned. Goods accepted for return must be in resaleable condition with original packaging.

Terms and Conditions of Sale

Our full Terms and Conditions of Sale are available upon request.

Single Patient Use

All orthopaedic products are sold under the condition of 'single patient use only' and any expressed warranties are rendered void if an orthosis is re-used for another patient.



Head & Neck

Pg. 8



Upper Limb

Pg. 9



Wrist & Hand

Pg. 10



Lower Limb

Pg. 11-14



Ankle & Foot

Pg. 15-22



Head Protex Soft Shell Helmet

A comfortable and easy to fit soft shell helmet providing suitable skull protection for children at risk from head injury.

Superior lightweight breathable padded foam with plush hypoallergenic lining. Adjustable padded chin strap with quick release childproof clips. Colour co-ordinated bumper adaptation available on provision of specification from a Healthcare Professional.

Indications For Use:

Indicated for use with children susceptible to head injury from; Epilepsy, Head drop syndrome, Balance and co-ordination issues, Self harm, Hydrocephalus, Post surgery.



Size (cm) Head Circ	Black Product Code	Aqua Product Code	Pink Product Code	Fitting Guide	Bumper Adaptation
46	HP/B/46	HP/A/46	HP/P/46	 If head circ. measures between sizes, please select next one up.	 Bumper adaptation also available.
48	HP/B/48	HP/A/48	HP/P/48		
50	HP/B/50	HP/A/50	HP/P/50		
52	HP/B/52	HP/A/52	HP/P/52		
54	HP/B/54	HP/A/54	HP/P/54		
56	HP/B/56	HP/A/56	HP/P/56		
58	HP/B/58	HP/A/58	HP/P/58		
60	HP/B/60	HP/A/60	HP/P/60		

Aqua available in smaller sizes

Size	Aqua Product Code
40	HP/A/40
42	HP/A/42
44	HP/A/44

Adaptation

Size	Product Code
Front Bumper	HP/FB
Rear Bumper	HP/RB
Strap	HP/S

Replacement Chin Strap Pad

Size	Product Code
Universal	HP/PCS



Foam Cervical Collar

Cervical collar specifically manufactured for infants, designed to perfectly adapt to the physical contours of neck. Manufactured in 6 cm-wide polyurethane foam with posterior hook and loop closure.

Indications For Use:

Mild trauma of bony and soft (whiplash) tissue of the body, postoperative patients, torticollis, cervical pain.



Size	Neck Circ (cm)	Product Code
S/1	23 - 28	O/CC/S
M/2	29 - 34	O/CC/M



Cool-sling

Lightweight breathable foam with a plush hypoallergenic lining and hook-loop closure. Adjustable shoulder strap with cushioning pad for additional comfort.

Indications For Use:

Post injury, post surgery, strains and sprains.



Size (Age / Years)	Product Code	Forearm Length (cm)
2 - 6	PCS/2-6	<23
6 - 12	PCS/6-12	23-30



Universal Foam Sling

Foam laminate construction, providing support to the shoulder, elbow, wrist and hand. Non-twist D-ring and strap system, abdominal band to secure arm against body, deep envelope to accommodate most casts and dressings

Indications For Use:

For non-surgical or post-operative support of the shoulder, mild sprains and strains of the shoulder or for fractures of the arm.



Size	Sling Dimensions (cm)	Product Code
Paed	35 x 14	BX/UNI/PAED



Clavicle Immobiliser

Made from honeycomb fabric lined with terrycloth. Featuring adjustable length/tension padded foam neoprene covered straps.

Indications For Use:

Mild trauma of bony (spinous and transverse processes) and soft (whiplash) parts of the body. Postoperative patients, torticollis, cervical pain, compressive syndromes, posture



Size	Age	Chest Circ (cm)	Product code
S/1	2-6	48-58	O/CI/S1
M/2	6-12	58-72	O/CI/M2



Immobilising Wrist Brace & Thumb Attachment

Orthosis features removable and malleable aluminium palmar and dorsal splints, which provide sufficient rigidity to immobilise the wrist joint in a functional position. Wrist support constructed from a comfortable honeycomb fabric interior and a velour finished exterior. Can be fitted with a detachable thumb attachment to convert brace to immobilise wrist and thumb.

Indications For Use:

Immobilisation and protection of the carpometacarpal and metacarpophalangeal joints, thumb joint, conservative treatment after surgery or injury.



Wrist Brace		Age	Wrist Circ (cm)	Product Code	
Size				Left	Right
S/1		2-6	10-12	O/IW/S1/L	O/IW/S1/R
M/2		6-12	12-15	O/IW/M2/L	O/IW/M2/R



Thumb Attachment		Age	Product Code
Size			
S/1		2 - 6	O/IWT/S1
M/2		6 - 12	O/IWT/M2

*Please order thumb attachment separately.



MATHI Resting Splint

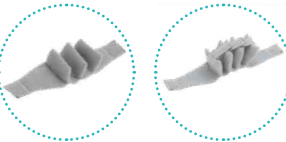
Constructed from breathable soft fabric and lightweight malleable aluminium which can be manipulated without tools into various functional positions. Wrist strap maintains suitable positioning and enables progressive stretching.

Indications For Use:

Contracture in flexion or hyperextension of the wrist, including contracted fist, contracture of the hand with or without radial or ulnar deviations of the hand, contractures in flexion or hyperextension of the interphalangeal articulations including thumb abduction.



Size	Palm Width (cm)	Left	Right
Small	4 - 5.5	MATHIP/L/S	MATHIP/R/S
Large	5 - 6.5	MATHIP/L/L	MATHIP/R/L



Finger Separator Finger Extensor

Attachments	Product Code
Finger Separator	MATHIP/FS
Finger Extensor	MATHIP/FE



Tibiofemoral Single De-rotation Orthosis

Provides an orthotic solution to correct lower limb positioning & enables either foot to be in the line of progression during gait.

Consists of a waist band and either a left or right unidirectional elastic strap featuring silicone pimples for improved anatomical adhesion. Strap applies spiral traction from medial side of the foot to the waist, rotating the tibia, femur and hip in the desired corrective direction. If external rotation is required simply swap the left and right straps for the desired effect.

Enables greater joint stability, core support and proprioceptive feedback. Lightweight and comfortable to enable greater autonomy for everyday activities

Indications for use: (Applicable to single and double versions)

Gait disorders through infant cerebral palsy, spina bifida, disorders during embryonic development, hypotonic musculature, other neurological disorders.



Size	Measurement		Product Code		Fitting Guide
	Waist Circ (A) Cm	Strap Length Cm	Left Strap	Right Strap	
Small	44 - 55	120	OP1174/L/S	OP1174/R/S	
Medium	52 - 61	142	OP1174/L/M	OP1174/R/M	
Large	56 - 65	164	OP1174/L/L	OP1174/R/L	
X-Large	62 - 71	187	OP1174/L/XL	OP1174/R/XL	



Tibiofemoral Double De-rotation Orthosis

Designed to assist with correction of internal/external rotation of both lower limbs, provides an orthotic solution to correct lower limb positioning & enables both feet to be in the line of progression during gait.

Consists of a belt and two unidirectional elastic straps featuring silicone pimples for improved anatomical adhesion. Straps apply spiral traction from medial side of the foot to the waist, rotating the tibia, femur and hip in the desired corrective direction. If external rotation is required simply swap over the left and right straps for the desired effect. Enables greater joint stability, core support and proprioceptive feedback.



Size	Measurement		Product Code	Fitting Guide
	Waist Circ (A) Cm	Strap Length Cm		
X-Small	44 - 50	120	OP1173/XS	
Small	48 - 55	120	OP1173/S	
Medium	52 - 61	142	OP1173/M	
Large	56 - 65	164	OP1173/L	
X-Large	62 - 71	187	OP1173/XL	



Re-alignment Orthosis

Lower limb re-alignment orthosis designed to provide patients with a more functional gait pattern and greater autonomy for everyday activities.

Composed of a trunk and two thigh supports linked by elastic straps, which create rotational forces from inside of both thighs to the back of the belt. This encourages lower limb abduction and external rotation consequently enabling better alignment.

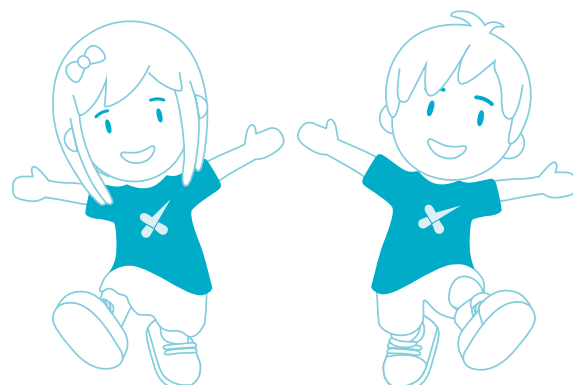
The belt and thigh support are made from velour and are fastened at the front by means of Velcro straps, which feature silicone dots on the inside to prevent displacement of the orthosis.

Indications For Use:

Neurological and orthopaedic gait disorders affecting positioning and rotation of lower limbs, can be effective in patients with cerebral palsy, spina bifida, disorders during embryonic development and patients with hypotonic musculature.



Size	Perimeter A (cm)	Perimeter B (cm)	Product Code	Fitting Guide
S/1	48 - 55	28 - 35	O/RO/S1	
M/2	52 - 61	31 - 40	O/RO/M2	
L/3	56 - 65	37 - 46	O/RO/L3	
XL/4	62 - 71	41 - 50	O/RO/XL4	



Stock Gaiters

Breathable cotton fabric gaiters available in a wide range of colours and sizes. Used to maintain the arm or leg in extension for rehabilitation purposes.

Full circumferential straps allow for adjustments in size.

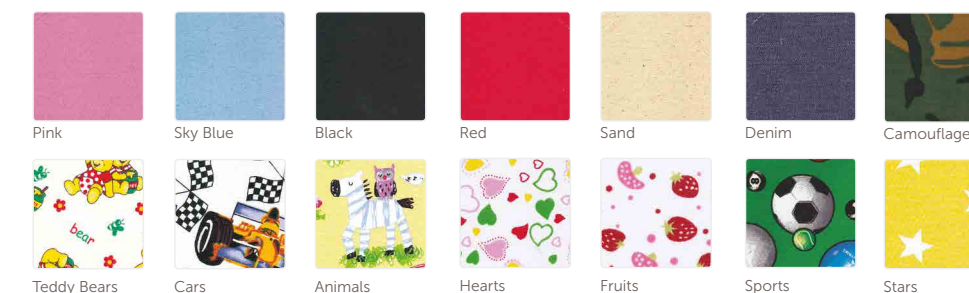
Standard gaiter finished with imperial plush lining. Deluxe gaiter finished with a padded velfoam lining. Standard or deluxe available with regular fly or 2" extra fly closing tab. Wide range of colours or pattern fabrics available.

Sold as a pair, unless single requested

Indications For Use:

Post injury, post surgery, strains and sprains, juvenile RA, night resting splint.

Fabric selection available: (Please note actual pattern may vary from illustration below)



When ordering please quote fabric, product code and state whether you require a single or pair



Size	Length (cm)	Top Circ (cm)	Bottom Circ (cm)	Regular Fly		Extra 2" Fly	
				Standard	Deluxe	Standard	Deluxe
X Small	20	17 - 24	12 - 19	300	300DX	300F	300DXF
X Small	25	17 - 24	12 - 19	301	301DX	301F	301DXF
Small	20	23 - 30	14 - 21	302	302DX	302F	302DXF
Small	25	23 - 30	14 - 21	303	303DX	303F	303DXF
Small	30	23 - 30	14 - 21	304	304DX	304F	304DXF
Medium	30	30 - 37	17 - 21	305	305DX	305F	305DXF
Medium	35	30 - 37	17 - 21	306	306DX	306F	306DXF
Large	40	37 - 44	20 - 27	307	307DX	307F	307DXF
Large	45	37 - 44	20 - 27	308	308DX	308F	308DXF
Large	50	37 - 44	20 - 27	309	309DX	309F	309DXF
X Large	45	44 - 51	23 - 30	310	310DX	310F	310DXF
X Large	50	44 - 51	23 - 30	311	311DX	311F	311DXF

A variety of made to measure gaiters are also available on request.

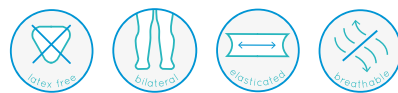


Padded Knee Brace

Constructed from honeycomb fabric and velour with rear hook and loop fastening. Featuring a protective padded area to prevent bruising and abrasions to front of knee.

Indications For Use:

Post-operative treatment, protection against possible bruising from trauma.



Size	Age	Knee Cap Circ (cm)	Product Code
S/1	2 - 6	20-26	O/PK/S1
M/2	6 - 12	26-32	O/PK/M2



Hinged Knee Brace

Constructed from honeycomb fabric and velour with rear hook and loop fastening. Featuring a polycentric joint to stabilise the knee in the medial-lateral direction.

Indications For Use:

Patellofemoral injuries, post-operative treatment, medio-lateral instability, rehabilitation, any knee condition that requires unloading of the patella.



Size	Age	Knee Cap Circ (cm)	Product Code
S/1	2 - 6	20-26	O/HK/S1
M/2	6 - 12	26-32	O/HK/M2



Patella Alignment Knee Brace

Constructed from honeycomb fabric and velour with rear hook and loop fastening. Featuring flexible spiral side stays, with lateral patella pad in the shape of a semi-circle.

Indications For Use:

Patella subluxation, post surgery on the lateral retinaculum or recurrent dislocation of the patella.



Size	Age	Knee Cap Circ (cm)	Product Code
S/1	2 - 6	20-26	O/PAK/S1
M/2	6 - 12	26-32	O/PAK/M2



Ankle Support

Constructed from a honeycomb fabric interior and a velour finish exterior with elastic Lycra strap. Open front design for easy fitting and incorporates a figure-of-eight elastic strap for stabilisation and hook and loop fastening.

Indications For Use:

Light sprains, tendonitis, mild ankle instability.



Size	Age	Ankle Circ (cm)	Product Code
S/1	2 - 6	<20	O/AS/S1
M/2	6 - 12	20-24	O/AS/M2



Ankle Stabilising Orthosis

Superb medio-lateral control of ankle joint, made from lightweight coolflex material. "Figure of 8" strapping mimics taping application, additional support with lacing and cuff enclosure.

Indications For Use:

Inversion or eversion sprains, medial or lateral instability, subtalar joint instability.



Size	Short Heel Circ (cm)	Product Code
Paed	23 - 25.5	264019



Plantar Fasciitis / Achilles Tension

Strong, lightweight shell with padded liners. Adjustable flexion straps hold foot in dorsi flexion and allows load application to soft tissues of plantar fascia and achilles tendon.

Indications For Use:

Plantar fasciitis, achilles tendonitis, muscle tightening.



Size	Footplate Length (cm)	Brace Height (cm)	Product Code
XS	17	22	PAED/PFS/XS
Small	21	28	PAED/PFS/S



Boxia® Drop-Foot AFO

Comfortable and cosmetic orthosis designed for discreet treatment of flaccid paralysis drop foot. Consists of two separate components; a cuff situated above the ankle and a non-slip hook section which fits between laces/hook and loop straps of footwear. Both components are connected via an elastic tension strap which enables complete adjustment of the required level of dorsiflexion.

Made from perforated material for ventilation and includes gel padded sections for enhanced achilles and dorsiflexor tendon comfort. Discreet design which does not occupy any space in the shoe.

How It Works:

The Boxia support raises the forefoot, providing vital foot clearance during swing phase, thus reducing risk of tripping over everyday objects.

Indications For Use:

Flaccid paralysis drop foot



Size	Ankle Circ (cm)	Product Code black	Product Code beige
Paed	13 - 17	BOX/XS	BBOX/XS



Night-time Hallux Valgus Correction Orthosis

Made with a breathable honeycomb fabric interior and terrycloth exterior. Features a malleable aluminium abductor splint for adjusting the position of the big toe, three hook and loop fastening straps and also an interior pad to protect the first metatarsal head.

Indications For Use:

Postural correction of hallux valgus. Post-surgery.



Size	Age	Product Code Left	Product Code Right
S/1	2-6	OP1193/S1	OP1192/S1
M/2	6-12	OP1193/M2	OP1192/M2



Open Toe / Heel Cast Boot

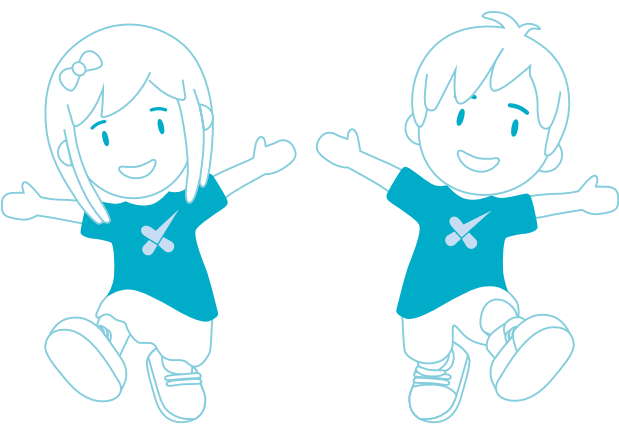
Lightweight open toe / heel boot designed to be worn by children with lower limb cast or post-operation with bulky dressings. Features comfortable fabric upper with rocker sole unit and easy to fasten Velcro straps. Available in red or blue teddy pattern.

Indications For Use:

Post injury, post-surgery, early mobilisation



Size	Length (cm)	Product Code	
		Blue	Red
Small	11.5	FK1051-S-B	FK1051-S-R
Medium	14	FK1051-M-B	FK1051-M-R
Large	16.5	FK1051-L-B	FK1051-L-R
X Large	18.5	FK1051-XL-B	FK1051-XL-R



Supporting your wellbeing



Feet In Motion Corrective Insoles (FIM)

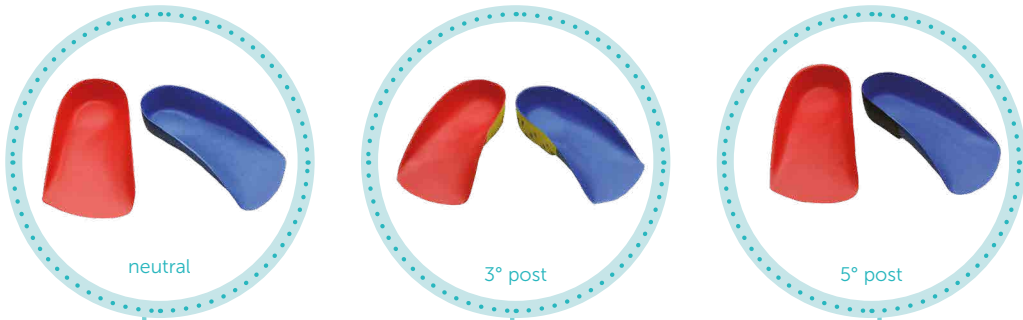
High density, deep cupped EVA orthosis especially designed for children’s feet by the leading UK Podiatrists.

The brightly coloured insoles consist of one red (right foot) and one blue (left foot) to help children remember, whilst providing a functional solution.

Pre-fabricated off the shelf insoles (pair) are available in neutral or with 3° or 5° medial rear foot posting. The neutral variant are non-corrective with enhanced arch support, the 3° posting variant corrects mild pronation of the feet, whilst the 5° posting offers correction of moderate to severe pronation of the feet.

During clinical studies this product achieved over 90% compliance rate amongst all patients trialled and was approved for the effective management of flat foot conditions (Pes Planus).

The slim line, lightweight design enables the insoles to be easily accommodated in most footwear.



Indications for use:

- Flat feet
- Postural related symptoms
- Hyper-mobility/ligament weakness
- Arch pain, heel pain, knee pain, back pain



Using The FIM Insoles

Three versions of the paediatric Feet In Motion (FIM's) insole are available across all size ranges. Each version has been designed to offer the following benefits:

- Neutral - Non corrective with enhanced arch support
- 3° Posting - Correction of mild pronation of the feet
- 5° Posting - Correction of moderate - severe pronation of the feet

All insoles should be placed into the child’s shoes taking care to insert them in the right (red insole) and left (blue insole) shoe correctly. Appropriate footwear is essential when using the insoles, which means a supportive style with a secure fastening is advisable.

Having placed an extra insole in the child’s shoes, it will probably make the shoes feel a little tight. This can be reduced by loosening the fastening but ensuring the shoe is still firm enough to prevent slipping at the heel. If the shoes already have an insole fitted by the manufacturer, it is often possible to remove this in order to help accommodate the corrective insole.

Care Of The FIM Insoles

The FIM's will typically last approximately 12 months depending on wear. They can be wiped with a damp cloth and a small amount of mild detergent. Allow them to dry naturally.



Size	Neutral Posting	3° Posting	5° Posting
19-20	FJ210/19-20	FJ230/19-20	FJ250/19-20
21-22	FJ210/21-22	FJ230/21-22	FJ250/21-22
23-24	FJ210/23-24	FJ230/23-24	FJ250/23-24
25-26	FJ210/25-26	FJ230/25-26	FJ250/25-26
27-28	FJ210/27-28	FJ230/27-28	FJ250/27-28
29-30	FJ210/29-30	FJ230/29-30	FJ250/29-30
31-32	FJ210/31-32	FJ230/31-32	FJ250/31-32
33-34	FJ210/33-34	FJ230/33-34	FJ250/33-34



Puffin – Dynamix Supramalleolar

Features:

- Two shell dynamic orthosis with a supramalleolar design made from low density polyethylene and polypropylene.
- Soft internal shell surrounds the tibial and fibular malleoli, encompassing the entire plantar surface and midfoot region.
- A rigid skeletal external shell reinforces the alignment applied by the orthosis.
- Midfoot Velcro closure system ensures appropriate fitting with straps that can be cut to desired length.
- Adhesive Velcro patches are placed between the shells preventing movement.
- Optional comfort pads for the toe and dorsal midfoot regions are also included.
- Lightweight, trimmable and adjustable.
- Latex Free.

Benefits:

- Allows free plantar and dorsal flexion.
- Realigns the entire foot and supports the medial longitudinal arch.
- Facilitates the development of movement patterns for a more natural gait.
- Stabilisation of the foot improving all phases of the gait cycle.
- Low profile design for ease of accommodation in patient’s footwear.
- Prefabricated for instant use, sized by simple foot measurement and competitively priced.

Indications for use:

- Moderate to severe pronation or supination.
- Instability in the subtalar joint, midfoot and forefoot.
- Severe flat foot.
- Lack of coordination or balance.



Size	Foot Length (cm)	Height (cm)	Puffin - Product Code		Fitting Guide
			Left	Right	
1	12.5	7.9	P1196/L/1	P1196/R/1	
2	13.5	8.3	P1196/L/2	P1196/R/2	
3	14	8.6	P1196/L/3	P1196/R/3	
4	15	9	P1196/L/4	P1196/R/4	
5	16	9.4	P1196/L/5	P1196/R/5	
6	17.5	9.8	P1196/L/6	P1196/R/6	
7	19	10.2	P1196/L/7	P1196/R/7	
8	21	10.8	P1196/L/8	P1196/R/8	
When fitting it is recommended to choose a size that leaves approximately 1cm of space between the end of the orthosis and the foot.					



Penguin – Dynamix Plantarflexion (Standard / Extended)

Features:

- Two shell dynamic orthosis available with standard or extended calf cuff. Made from low density polyethylene and polypropylene.
- Soft internal shell which extends from mid/top of calf, encompassing the entire plantar surface of the foot.
- A rigid skeletal external shell serves to reinforce the alignment applied by the orthosis, which reaches the proximal edge of the metatarsal heads.
- Midfoot Velcro closure system ensures appropriate fitting with trimmable straps.
- Adhesive Velcro patches are placed between the shells to prevent movement.
- Velcro strap on the upper cuff can be removed to allow free dorsal flexion.
- Includes comfort pads for the toe and dorsal midfoot regions.
- Lightweight, trimmable and latex free.

Benefits:

- Limits plantarflexion enabling better foot clearance during swing phase.
- Controlled dorsiflexion and plantar flexion.
- Stabilisation of the foot which improves all phases of the gait cycle.
- Supports the medial longitudinal arch.
- Improved control of postural movements and balance in stance and gait.
- Low profile design for ease of accommodation in patient’s footwear.
- Prefabricated for instant use, sized by simple foot measurement.

Indications for use:

- Dorsiflexion weakness in swing phase.
- Hyperextension of the knee.
- Incapacity or weakness of plantar flexion and/or dorsiflexion.
- Excessive plantar flexion (toe walking).
- Instability as a result of low or high muscle tone.
- Lack of coordination or balance.



Size	Foot Length (cm)	Penguin Standard			Penguin Extended		
		Height (cm)	Left	Right	Height (cm)	Left	Right
1	12.5	12.2	P1195/L/1	P1195/R/1	16.5	P1198/L/1	P1198/R/1
2	13.5	12.7	P1195/L/2	P1195/R/2	17.4	P1198/L/2	P1198/R/2
3	14	13.5	P1195/L/3	P1195/R/3	18.3	P1198/L/3	P1198/R/3
4	15	14.5	P1195/L/4	P1195/R/4	19.2	P1198/L/4	P1198/R/4
5	16	15.5	P1195/L/5	P1195/R/5	20.7	P1198/L/5	P1198/R/5
6	17.5	17	P1195/L/6	P1195/R/6	22.2	P1198/L/6	P1198/R/6
7	19	18.5	P1195/L/7	P1195/R/7	24	P1198/L/7	P1198/R/7
8	21	20.5	P1195/L/8	P1195/R/8	26	P1198/L/8	P1198/R/8
When fitting it is recommended to choose a size that leaves approximately 1cm of space between the end of the orthosis and the foot.							



Pelican – Dynamix Hinged

Features:

- Single shell dynamic orthosis made from low density polyethylene.
- Shell surrounds the tibial and fibular malleoli and comes into contact with the entire plantar surface, featuring a hinged ankle joint which enables the adjustment of dorsiflexion limit.
- Polyethylene foam is used to line the hinged region offering enhanced comfort and protection to the malleoli.
- Shell extends from mid calf to the proximal edge of the metatarsal heads.
- Midfoot Velcro closure system ensures appropriate fitting with trimmable straps.
- Includes comfort pads for the toe and dorsal midfoot regions.
- Lightweight, trimmable and latex free.

Benefits:

- Controls plantarflexion and toe walking.
- Realigns entire foot and supports the medial longitudinal arch.
- Facilitates the development of movement patterns for a more natural gait.
- Increased control of knee hyperextension.
- Ankle angle can be adjusted using posterior screw.
- Low profile design for ease of accommodation in patient’s footwear.
- Prefabricated for instant use and sized by simple foot measurement.

Indications for use:

- Incapacity or weakness of dorsiflexion.
- Excessive plantar flexion.
- Hyperextension of the knee.
- Instability as a result of low or high muscle tone.
- Lack of coordination or balance.



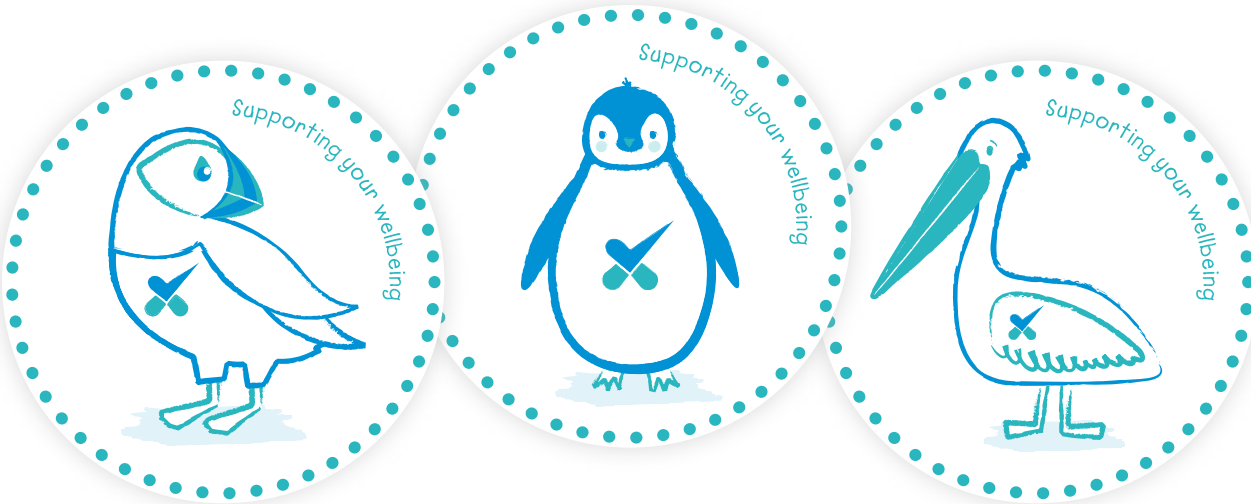
Size	Foot Length (cm)	Height (cm)	Pelican - Product Code		Fitting Guide
			Left	Right	
1	12.5	12.2	P1197/L/1	P1197/R/1	
2	13.5	12.7	P1197/L/2	P1197/R/2	
3	14	13.5	P1197/L/3	P1197/R/3	
4	15	14.5	P1197/L/4	P1197/R/4	
5	16	15.5	P1197/L/5	P1197/R/5	
6	17.5	17	P1197/L/6	P1197/R/6	
7	19	18.5	P1197/L/7	P1197/R/7	
8	21	20.5	P1197/L/8	P1197/R/8	

When fitting it is recommended to choose a size that leaves approximately 1cm of space between the end of the orthosis and the foot.



paediatric
Orthopaedic Products Designed For Children

Stickers are available with Dynamix range for limited time only





All products can be purchased online at:
www.orthotix.co.uk

T: 02920 370696 F: 02920 370697
E: enquiries@orthotix.co.uk

Dacey Ltd T/A Orthotix
Sanatorium Road, Canton, Cardiff, CF11 8DG

