



**PREFERRED
SUPPLIER CATALOGUE**

2ND
EDITION

Supporting your wellbeing

WWW.ORTHOTIX.CO.UK



PAEDIATRIC

ORTHOPAEDIC

SPORTS MEDICINE

PODIATRY

PROFILE

Orthotix was established in 2004 to provide ready-made orthoses to supplement the bespoke product being manufactured and supplied to the National Health Service by its holding company, Dacey Ltd.

Originally set up in the South Wales valley town of Merthyr Tydfil, the business has expanded significantly since its inception, adding further offices and additional warehouses to our main site in the capital city, Cardiff.

To this day, Orthotix remains a family owned and run business forming part of a portfolio of companies including Dacey Orthotic Services and Ace Feet in Motion; Collectively accumulating over 50 years of experience in the healthcare industry and now employing over 100 local staff.



AFFILIATES



Orthotix is proud to be the leading sports and orthopaedic bracing business in Wales, supplying a diverse range of products to NHS hospitals, healthcare businesses, sports organisations and direct to public across the United Kingdom and Ireland.

In addition to being a contracted supplier of orthotic consumables to the NHS, Orthotix is currently an official supplier of sports and rehabilitation bracing to Welsh Athletics, Cardiff City Football Club, Welsh Netball and Celtic Dragons.

The Orthotix mantra from the beginning has always been:

Supporting your wellbeing

CUSTOMER SERVICE

The award winning Customer Service team has underpinned the success of Orthotix and remains a principal value for continued future growth.

Our multi-disciplinary team consists of dedicated Trade and Retail Managers working alongside experienced in-house Healthcare Professionals to ensure that Orthotix is able to offer consistent, competent and friendly support to all customers.



PRODUCTS



Our continually expanding range of braces and supports offer an orthotic solution for the entire family whether it be a sporting injury or an orthopaedic pathology. The range encompasses all regions of the body, from head to toe with all products being certified as Class 1 medical devices and CE marked accordingly.

Orthotix fabricates a collection of products at its Welsh manufacturing facility and also benefits from exclusive distribution agreements with its market leading global partners. This enables some of the most successful orthopaedic products from around the world to be made available to the consumers of Great Britain.

Our in-house team of Healthcare Professionals (Orthotists, Podiatrists and Physiotherapists) enables Orthotix to continually develop, trial and test new and innovative products for the future.

The entire product range is stocked in our UK warehouses which allows us to dispatch any item ordered, same working day, whether it be a trade or retail customer.





029 2037 0696



029 2037 0697



Via Post



enquiries@orthotix.co.uk



www.orthotix.co.uk



Retail Outlet

METHOD OF DISPATCH

Your order will be dispatched by the most economical means available, with regard to weight volume and degree of urgency.

Options include:

- 2 - 3 working days (Standard delivery)
- Next working day (Unspecified time)
- Next working day before 12.00 noon
- Same working day (Price on application)
- Scheduled van delivery if contracted

INCORRECT DELIVERY

On receipt of goods, all customers are requested to check their consignment. In the unlikely event that the type or quantity of goods is incorrect then you are required to notify our Customer Services team within 14 days of the date of delivery.

Orthotix cannot accept responsibility for an alleged incorrect delivery if our Customer Services Team have not been informed within 14 days.



RETURN OF GOODS POLICY

Authorisation must be issued by Orthotix prior to goods being returned, please contact Customer Services within 14 days for a return reference number. Soiled, custom manufactured, modified or obsolete goods may not be returned.

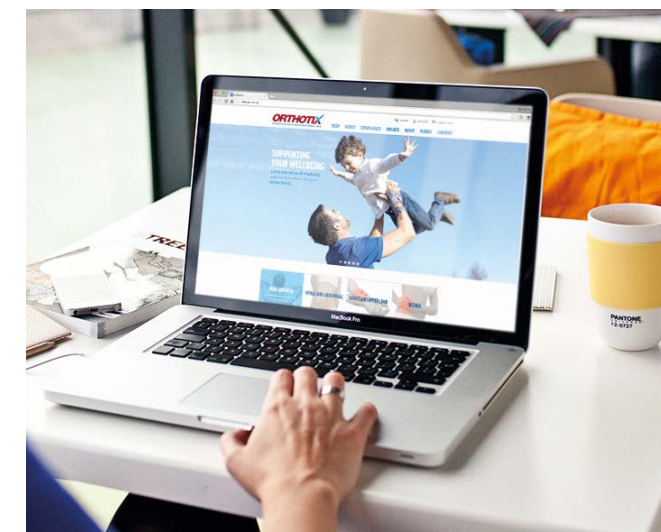
Goods accepted for return must be in resaleable condition, guaranteed infection free and in the original packaging. Orthotix reserves the right to charge delivery costs and / or a re-stocking fee.

SINGLE PATIENT USE

It is a condition of sale that any orthopaedic product purchased from Orthotix is restricted to 'Single Use Only' by the original patient/customer. This is to protect the care provider and the patient against potentially adverse consequences of infectious disease transmission or material instability resulting from previous use by the original wearer. Any expressed or implied warranties are voided if the orthosis is re-used for another patient.

Any orthosis purchased from Orthotix and fitted by anyone other than a qualified Healthcare Professional does so at their own risk. Orthotix is not liable for any damages incurred through ill-fitted or inappropriate product. If in doubt you should contact a suitable Healthcare Professional for further advice.

WEBSITE & ONLINE SHOP



Our new and improved website is now accessible and incorporates an easy to navigate online shop. This allows members of the public to browse all of our products for various conditions before ordering directly online.

The website also showcases professional how-to-fit video demonstrations, product guides, news stories, and many more informative features.

You can now follow us on:



www.orthotix.co.uk

RETAIL OUTLET

A selection of our most commonly used supports, splints and other products are available from our retail outlet situated on Sanatorium Road, Cardiff, CF11 8DG.

Patients can be redirected from hospitals, GP's, physiotherapists and other Healthcare Professionals to purchase suitable products for their injury or pathology.

Trained personnel are on-hand to assist customers with product selection, product fitting and purchasing.





PREFERRED SUPPLIER RANGE

Orthotix has enhanced its own range of products by approaching a selection of market leading manufacturers to set up preferential supplier partnerships. Consequently, Orthotix is now able to supply some of the most popular products from other manufacturers directly to all Dacey Ltd contract partners and affiliated trade accounts.

By committing to using the preferred products across the Dacey Ltd network, the subsequent high volumes, allows us to benefit from economies of scale. This enables us to supply these products at special discounted trade prices which are lower than the manufacturer's own trade list price.

All of the products showcased in this catalogue are now available directly through Orthotix. For all product enquiries and ordering please contact our Customer Service team. A digital copy of this catalogue is also available to download from www.orthotix.co.uk.

All pricing and distribution agreements have been established in association with:

DACEY
ORTHOTIC SERVICES

CONTENTS



10 - 12



13 - 15



16 - 17



18



19 - 20



21 - 22



23 - 31



REBOUND AIR WALKER BOOT

Linked medial and lateral air bladders with a single inflation point provide balanced compression and are shaped to cradle the Achilles.

Fully-integrated air pump and release valve provides easy, tool-free inflation and deflation for fine-tuned, consistent compression. Flex Edge™ overmoulding conforms to each patient's unique anatomy to help limit the formation of pressure points. Rocker bottom promotes a natural gait.

Indications for use:

Sprains, stable fractures, soft tissue injury, post-op.

Size	Shoe Size UK	Product Code-Short	Product Code-Standard
X-Small	1.5 - 3.5	B242900061	B242900001
Small	4 - 6.5	B242900062	B242900002
Medium	7 - 10	B242900063	B242900003
Large	10.5 - 12	B242900064	B242900004
X-Large	12.5 - 14.5	B242900065	B242900005



DH OFFLOADING DIABETIC WALKER

Shear force reduction by stabilising foot and ankle at 90°. Wide low profile rocker bottom provides a smooth rollover and increased stability for altered gaits. The softgood's patented inner bootie prevents the foot from migrating on the insole.

Designed around Össur's unique Active Offloading Insole. Provides a safe environment for the simultaneous use of wound care material. Easy to apply and modify.

Indications for use:

Treatment of plantar ulcers.

Replacement liners & insoles available upon request.

Size	Shoe Size UK	Product Code
X-Small	1.5 - 3.5	DH0200BLK
Small	4 - 6.5	DH0400BLK
Medium	7 - 10	DH0600BLK
Large	10.5 - 12	DH0800BLK
X-Large	12.5 - 14.5	DH1000BLK



AFO LIGHT

Energy return and propulsion assistance at toe off. Supports the foot for ground clearance during swing phase. Carbon fibre design provides excellent strength to weight ratio and dynamic motion. Gradual plantar flexion at initial contact. Stiffness gradient at heel and the toe correspond to ground reaction forces as they are applied to the foot.

Indications for use:

Mild to moderate drop foot.

Size	Calf Height (cm)	Shoe Size UK Male	Shoe Size UK Female	Product Code Left	Product Code Right
Small	32 - 36	Up to 7	4.5 - 6	O-121022	O-121012
Medium	34 - 38	7.5 - 10	7 - 9.5	O-121024	O-121014
Large	36 - 40	10.5 - 13.5		O-121026	O-121016
X-Large	38 - 42	11.5 - 14.5		O-121028	O-121018



UNLOADER ONE KNEE BRACE

Unloader One® is a comfortable, lightweight, low-profile brace that provides excellent suspension and unloading leverage. This lightweight brace preserves the clinically-proven Össur® Unloader 3-Points of Leverage design.

Indications for use:

Articular cartilage defect repair, avascular necrosis, meniscal cartilage repair, mild to severe unicompartmental osteoarthritis.

When sizing measure 15cm below mid patella

Size	Circ (cm)	Hinge Medial Left	Hinge Medial Right	Hinge Lateral Left	Hinge Lateral Right
Small	31 - 35.5	B-240619712	B-240519712	B-240629712	B-240529712
Medium	35.5 - 42.5	B-240619713	B-240519713	B-240629713	B-240529713
Large	42.5 - 51	B-240619714	B-240519714	B-240629714	B-240529714
X-Large	51 - 61.5	B-240619715	B-240519715	B-240629715	B-240529715





REBOUND HIP BRACE

Low-profile, lightweight design that supports patient comfort and compliance.

Quick-release pegs easily adjust the desired range-of-motion needed for the patient's optimal rehab.

Quick-fit with sliding mechanism on frame to adjust for patient's height. Optional, adjustable ROM hinge enables adduction/abduction from 0° to 10°, 20° or 30°

Indications for use:

Hip conditions that could benefit from motion restriction following surgery, primary arthroplasty patients at risk of dislocation, post-operative revision patients, femoral acetabular impingement arthroscopic surgery,

Size	Hip Circ (cm)	Product Code - Left	Product Code - Right
Universal	Up to 122	980130RB	980135RB

Belt Extender (Hip Circ)	Product Code
123cm - 170cm	980121RB



NEWPORT LITE HIP BRACE (UNIVERSAL)

Protects the hip joint capsule by providing a limited and safe range of motion following surgical procedures, well-tolerated by patients.

Virtual joint is easily set to control hip flexion, extension, adduction and abduction, kinaesthetic reminder, universal for right or left side, easily customised to provide an exact fit.

Indications for use:

Minimally invasive hip procedures, hip resurfacing procedures, labral repair, patients at risk for an anterior dislocation, chronic dislocation.

Size	Model No
Universal	B/3662
Abduction Control Joint	B/3662.03
Pelvic Component	B/3662.04



ASPEN VISTA COLLAR WITH SPARE PAD SET

Innovative height adjustment technology. Adjustable front depth using a unique dial adjustment mechanism.

The Vista collar is really six collars in one, always providing you with the correct size. Reducing storage and inventory costs. 100% latex free cotton pads.

Indications for use:

Post trauma, stable cervical fractures, cervical spondylitis, R/A and O/A cervical spine, herniated cervical disc, post operation, motor neurone disease.

Size	Product Code
Universal (collar & spare pad set)	984002

Size	Product Code
Replacement Pad Set	984020



ASPEN VISTA CTO 2 POST

Utilises Vista Multipost Collar for patient comfort and motion restriction. One size fits all with several easy adjustment features that allows the practitioner the ability to fit a wide variety of patient anatomies with just one stocking unit required.

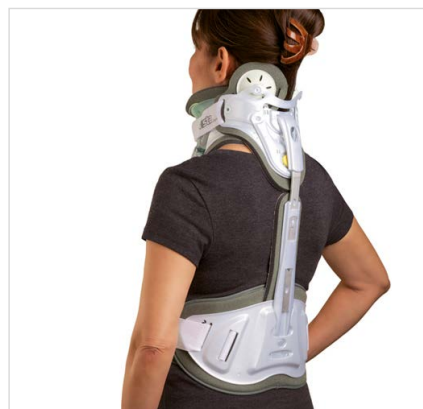
Easy application, no tools are required when applying, adjust the torso height dial to accommodate anatomical changes ensuring the patients will be comfortable and supported while laying, sitting or standing and also providing a custom length to each patient's torso. Multiple adjustment points, provides a customised chest angle for each patient. Steps down to stand alone collar for rehabilitation purposes.

100% latex free breathable cotton pads complete the system by allowing air to circulate and also wicking moisture away from the skin.

Indications for use:

Lower cervical / upper thoracic injuries C1 - T2, suitable for unstable fractures.

Size	Product Code
Universal	984500



ASPEN VISTA CTO 4 POST

The Vista CTO4 is designed to provide motion restriction throughout the cervico-thoracic spine and can easily be stepped down to the Vista CTO then Vista MultiPost to support the progression of care.

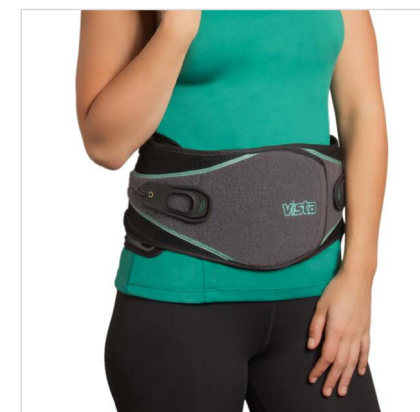
Significant motion control is provided in all three planes of motion—flexion/extension, lateral bending and axial rotation. Even while providing this level of motion restriction, the Vista CTO4 is comfortable for the patient to wear, padded at all contact points, helping to ensure compliance.

The Vista CTO4 is designed to provide motion restriction throughout the cervico-thoracic spine and can easily be stepped down to the Vista CTO then Vista MultiPost to support the progression of care.

Indications for use:

Lower cervical/upper thoracic injuries C1-T2.

Size	Product Code
Universal	984550



ASPEN VISTA 631 LSO

One LSO comfortably fits waist measurement 26" – 60". Sure Slot™ System Unique sizing mechanism allows for quick and easy adjustment, without the use of tools. Integrated Anterior Panels Anterior panels at each end of the brace overlap to guarantee effective midline support. Featuring Aspen's innovative FlexTab™ Technology, these panels disperse pressure and naturally conform to each patient's anatomy for increased comfort.

Advanced Inelastic Compression Aspen's Super SlickTrack™ System features an independent upper and lower tightening mechanism providing direct compression where needed for maximum pain relief, regardless of patient's strength.

Indications for use:

Motion restriction of thoracic and lumbar regions T9 – S1, post operative support / pain relief, degenerative disc disease, bulging or herniated disc, chronic low back pain, fracture management.

Size	Product Code
Universal	993340



ASPEN VISTA 464 TLSO

Comfortably fits a waist measurement 26" - 60", adjusts to fit patients from 4'8" - 6'8". Three shoulder strap configuration to allows you to easily tailor the TLSO to accommodate a majority of body styles, whilst providing effective lumbar and thoracic support.

Effective track compression tightening system for superior closure regardless of patient strength. Wound window to offload the pressure around the operation site and clear visibility without removing brace.

Easy to step down. As patient rehabilitates the brace can be stepped down to an effective LSO and then lumbar support.

Indications for use:

Motion restriction of the thoracic and lumbar regions - T9 - S1.

Size	Product Code
Universal	993640



*Measure circumference of thigh 15cm above the centre of the patella

STABIMED

Polycentric physioglide hinges based on the principle of 4-chain linkage. Wraparound version with velcro closing to the front and net material on the back for added comfort. Made of breathable and moisture wicking medi airtex material. Extension limitation at: 0°, 10°, 20°, 30°,45°. Flexion limitation at: 0°, 10°, 20°, 30°, 45°, 60°, 75°, 90°. Immobilisation at: 0°, 10°, 20°, 30°, 45°. Medial and lateral anti migration silicone strips.

Indications for use:

Mild to moderate instabilities of the knee joint, meniscus injuries, traumatic or degenerative deformities of the knee joint and for protection in the later stages of rehabilitation.

Size	Thigh Circ (cm)	Product Code
X Small	31 - 37	826/1
Small	37 - 45	826/2
Medium	45 - 51	826/3
Large	51 - 57	826/4
X-Large	57 - 65	826/5
2X-Large	65 - 74	826/6



*Measure circumference of thigh 15cm above the centre of the patella

PT CONTROL KNEE BRACE

The medi PT Control knee brace limits flexion/extension of the knee joint and prevents lateral movement.

Polycentric physioglide hinges based on the principle of 4-chain linkage, made of breathable and moisture wicking medi airtex material, extension limitation at: 0°, 10°, 20°, 30°, 45°, flexion limitation at: 0°, 10°, 20°, 30°, 45°, 60°, 75°, 90° and 120°, immobilisation at: 0°, 10°, 20°, 30°, 45°.

Indications for use:

Patellofemoral pain syndrome, patella chondropathy, retropatella osteoarthritis, post-op, after lateral release surgery to limit the extension and flexion of the joint, patella and knee instabilities.

Size	Circumference (cm)	Right	Left
X-Small	31-37	888/1	889/1
Small	37-45	888/2	889/2
Medium	45-51	888/3	889/3
Large	51-57	888/4	889/4
X-Large	57-65	888/5	889/5
2X-Large	65-74	888/6	889/6



*Measure circumference of thigh 15cm above the centre of the patella

M.4 AGR KNEE BRACE

AGR has a progressive dampening mechanism that decelerates the knee joint movement during the extension phase of gait. This lessens impact on the posterior capsule and facilitates prevention of further injury.

Indications for use:

Polycentric physioglide hinges based on the principle of 4-chain linkage low profile, light weight frame and hinge construction, easy to position anatomically shaped version, physioglide hinge ensures that the knee brace moves correctly and naturally with the knee movement, ability to predefine the absorption load, ability to regulate flexion and extension.

Size	Circumference (cm)	Right	Left
X-Small	31-37	898/1	899/1
Small	37-45	898/2	899/2
Medium	45-51	898/3	899/3
Large	51-57	898/4	899/4
X-Large	57-65	898/5	899/5
2X-Large	65-74	898/6	899/6



*Measure circumference of thigh 15cm above the centre of the patella

M.4S OA KNEE BRACE

‘S’ profile improves torsional stability whilst following natural alignment of femur and tibia, hinges proximal to knee joint allow precise off loading of the knee, polycentric hinges, anatomically premoulded frame. Numbered straps ensure a simple fastening sequence, air condyle pads with skin-grip system, excellent comfort with new soft-grip padding material, extension limitation at: 0°, 10°, 20°, 30°, 45°, flexion limitation at: 0°, 10°, 20°, 30°, 45°, 60°, 75°, 90°, 120°, immobilisation at: 0°, 10°, 20°, 30°, 45°.

Indications for use:

Conservative treatment of complex ligament instability, particularly in combination with unilateral osteoarthritis, conservative treatment of advanced unilateral osteoarthritis, post-operative pressure relief and compartmental protection after fractures of the tibial head, cartilage surgery, meniscus refixation, correction osteotomy, instability of the cruciate ligaments.

Size	Circumference (cm)	Varus Right	Varus Left	Valgus Right	Valgus Left
X-Small	31-37	904/1	905/1	906/1	907/1
Small	37-45	904/2	905/2	906/2	907/2
Medium	45-51	904/3	905/3	906/3	907/3
Large	51-57	904/4	905/4	906/4	907/4
X-Large	57-65	904/5	905/5	906/5	907/5
2X-Large	65-74	904/6	905/6	906/6	907/6



MATRIX MAX 2 AFO

Easy-Trim foot plate allows fitting of up to 3 shoe sizes with one product. Advanced reinforced lateral strut for greater stability, durability and energy return.

Narrower foot plate in the medial arch allowing for an easier shoe fit. Heat-mouldable, trimmable and height adjustable anterior shell. Shrink tubing along the lateral strut protects the shoe against damage.

Indications for use:

Low to high activity patients with unilateral or bilateral drop foot; suitable for partial foot amputations.

Size	Height (cm)	Foot Length (cm)	Left	Right
Small	39 - 42	22 - 24	FH260L-02	FH260R-02
Medium	41 - 43	24 - 26	FH260L-03	FH260R-03
Large	43 - 46	26 - 29	FH260L-04	FH260R-04
X-Large	43 - 46	29 - 31	FH260L-05	FH260R-05

Ribcap have designed a range of fashionable soft protective headgear which are embedded with unique absorbing foam to reduce the force of impact to the head. Suitable for everyday use, ideal for people with special needs, active people, kids, young adults and seniors.

The range provides excellent soft protection for; reduction of impact during head banging, general autism and epilepsy, cerebral palsy and other mobility disorders.



LENNY

Lenny is the most popular beanie ribcap, loved by customers for its unique look and feel. Fabricated from merinowool.

Size	Head Circ (cm)	Product Code - Grey
Small	53 - 55	LENNY/GREY/S
Medium	56 - 58	LENNY/GREY/M
Large	59 - 61	LENNY/GREY/L
X-Large	62 - 65	LENNY/GREY/XL

Size	Head Circ (cm)	Product Code - Rose	Product Code - Khaki
Small	53 - 55	LENNY/ROSE/S	LENNY/KHAKI/S
Medium	56 - 58	LENNY/ROSE/M	LENNY/KHAKI/M
Large	59 - 61	LENNY/ROSE/L	LENNY/KHAKI/L



Fitted with chin strap



Fitted with chin strap

COTTON TWILL BASEBALL CAP

Ribcap's baseball cap design offering both style and protection, finished with a comfortable chin strap closure for secure fitting.

Size	Head Circ (cm)	Product Code
Small/Medium	53 - 58	BASEBALL/NAVY/S
Large/XLarge	59-65	BASEBALL/NAVY/L

Size	Head Circ (cm)	Product Code
Small/Medium	53 - 58	BASEBALL/PLATIN/S
Large/XLarge	59-65	BASEBALL/PLATIN/L



IGGY

Iggy is the alternative multicolor ribcap, loved by our customers for its unique look and feel. Fabricated from the finest merinowool (outside) and an added a layer of coolmax for a perfect combination of style and function.

Size	Head Circ (cm)	Product Code
Small	53 - 55	IGGY/STRIPY/S
Medium	56 - 58	IGGY/STRIPY/M
Large	59 - 61	IGGY/STRIPY/L



LENNY KIDS

Lenny is the most popular beanie ribcap and now it's available in kids sizing too! Loved by customers for its unique look and feel. Fabricated from merinowool (outside) and an added a layer of coolmax for a perfect combination of style and function.

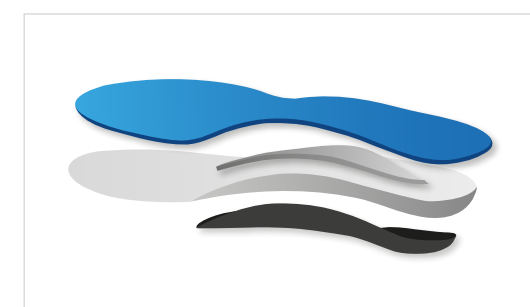
Size	Head Circ (cm)	Product Code - Anthracite
Mini	47 - 49	LENNY/ANTHRACITE/MINI
Midi	50 - 52	LENNY/ANTHRACITE/MIDI
Maxi	53 - 55	LENNY/ANTHRACITE/MAXI



BIEBER KIDS

Bieber kids is the original, soft & smooth ribcap, loved by kids for it's unique look and feel. Fabricated for the finest merinowool (outside) and an added layer of fleece for the perfect combination of style and function. Ideal for active kids during their everyday outdoor activities.

Size	Head Circ (cm)	Product Code - Anthracite
Mini	47 - 49	BIEBER/BROWN/MINI
Midi	50 - 52	BIEBER/BROWN/MIDI
Maxi	53 - 55	BIEBER/BROWN/MAXI



MODULAR FIM

The FiM is a semi-bespoke insole that is designed to support the 3 main arches of your foot, the medial, lateral and transverse arch.

Key Information:

Made during your appointment time. 3 different densities available allowing for a comfortable fit and improved compliance rates. Made from a rubber based material (EVA) Cost effective device that has a lifespan of 12 – 18 months and is quick to repeat if more pairs are required.

Density	Shoe Size (UK)					
Medium (black)	1 - 2	3 - 4	5 - 6	7 - 8	9 - 10	11 - 12
High (white)						



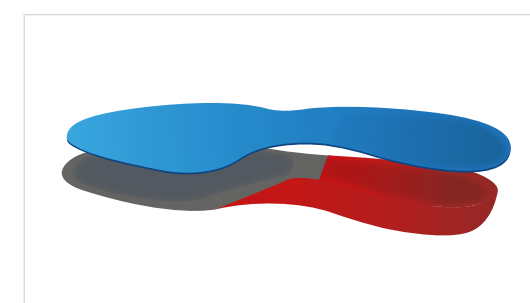
SLIM FIM

This is a semi-bespoke insole made from a lightweight, semi rigid plastic shell.

Key Information:

Made during your appointment time. Slim design allows for a better fit in lower profile footwear. Cost effective device that has a lifespan of 12 – 18 months and is quick to repeat if more pairs are required.

Width	Shoe Size (UK)					
Standard	1 - 2	3 - 4	5 - 6	7 - 8	9 - 10	11 - 12
Narrow			5 - 6	7 - 8		



EVA CADCAM

Custom made insole – milled and finished specifically for your foot. Impressions will need to be taken at the time of the appointment for production of these devices.

Key Information:

Made to measure insoles. Up to 10 working days to be made. Different densities available. EVA is very comfortable to wear. Lifespan of 18-24 months depending on level of use.



MOULDED PLASTIC

Custom made insole – This insole will be moulded around your foot specifically. Impressions will need to be taken for these insoles to be made.

Key Information:

5 year guarantee on the plastic mould (this will cover wear and tear but not loss). Postings and covers will need refurbishing every 18-24 months (charges apply).

Increased level of support and control due to the firm shell. Up to 10 working days to be made. Low profile for great fit in a variety of footwear.



CARBON FIBRE

Custom made insole – This insole will be moulded around your foot specifically. Impressions will need to be taken for these insoles to be made.

Key Information:

10 year guarantee on the carbon fibre mould (this will cover wear and tear but not loss). Postings and covers will need refurbishing every 18-24 months (charges apply).

Increased level of support and control due to the firm shell. Up to 10 working days to be made. Low profile for great fit in a variety of footwear.



POSTURAL SHOULDER SUPPORT



Breathable foam fabric, elastic in the under arm area for more comfort. Both bands are joined by elastic that facilitates easy fitting. Figure of eight enhanced comfort shoulder support, effective for shoulder retropulsion and reduction of dorsal kyphotic curvature.

Indications for use:

Dorsalgia, muscular imbalances, kyphotic attitude, slight spinal deviations.

Size	Below Chest Circ (cm)	Product Code	Fitting Guide
S/1	75 - 85	E-250/1	
M/2	85 - 105	E-250/2	
L/3	105 - 130	E-250/3	



NEURO-CONEX SHOULDER SUPPORT



An orthosis made from breathable foam with velour exterior and inner honeycomb fabric lining, with Velcro strap and push button buckle closure systems. The support is reinforced by a 0.5 mm-thick thermoplastic core to increase its support capacity, prevent malformation and enable a personalised fit.

Forearm strap with Velcro closure system and loops for the adjustment straps with inner pimpled silicone to prevent movement. Designed to facilitate free arm movement and to enable the patient to fit the support with one hand.

Indications for use:

Neurological injuries to the upper limb. Brachial plexus injury with shoulder and arm paralysis. Hemiplegia caused by a stroke. Peripheral nerve and brain trauma injuries. Painful and unstable shoulder.

Size	Arm Circ (cm)	Left	Right	Fitting Guide
S/1	22.5 - 28	94303I/1	94303D/1	
M/2	28 - 34	94303I/2	94303D/2	
L/3	34 - 40	94303I/3	94303D/3	



UNIVERSAL ABDOMINAL BINDER

One size fits all, white abdominal binder / support designed to fit men and women. Features easy-to-fit innovative double-band closure system.

Soft breathable Italian fabric offering luxurious comfort and adjustable level of compression and support.

Indications for use:

Pre / post abdominal surgery, ideal for hernia containment and abdominal muscle weaknesses breakdown.

Size	Product Code
Universal	810/UNI



CARPAL GEL SLEEVE

Designed for placement directly over carpal tunnel post-op scar area. Helps reduce shock, impact and abrasion.

Integrated mineral oil pad helps prevent and reduce scar tissue. Can be worn under gloves, splints or supports. Hand washable and reusable.

Indications for use:

Post carpal tunnel surgery to manage scars and sensitive areas of skin

Size	Product Code Left	Product Code Right
Small/Medium	CGS/S/L	CGS/S/R
Large/X-Large	CGS/L/L	CGS/L/R



SPINAL PLUS OSTEOPOROSIS BRACE

Padded shoulder straps with position settings which can be set prior to use. Velcro® closure. Elastic insert with biodynamic effect. Mouldable inner frame in aluminium alloy, X-ray permeable. Abdominal and dorsal tensioning straps, made from comfortable belt material. Buckles with self-aligning mounting points. State-of-art system of tensioning straps. Two-layer PE padding with suede and mesh fabric cover.

Indications for use:

Dorsolumbalgia after healing of stable compression fractures of dorsolumbar vertebrae. Mild compression fractures of dorsolumbar vertebrae caused by osteoporosis or metastatic tumors. Hyperkyphosis of the thoracic spine, post-traumatic or caused by arthrosis. Juvenile osteochondrosis

Size	Distance T1-L5 (cm)	Product Code
X-Small	35 - 41	T1049/XS
Small	41 - 47	T1049/S
Medium	47 - 54	T1049/M
Large	54 - 61	T1049/L



PALM PROTECTOR

Palm protector medical device available for left or right hand. One size will generally fit all.

Features protective foam and soft wool-like palm region. Adjustable Velcro closure strap which can be trimmed as required to fit. Simple to don and doff.

Indications for use:

Flexion deformities of fingers, prevention of nail to palm contact, skin breakdown, improved hand hygiene.

Orientation	Size	Product Code
Left	Universal	PP/UNI/L
Right	Universal	PP/UNI/R



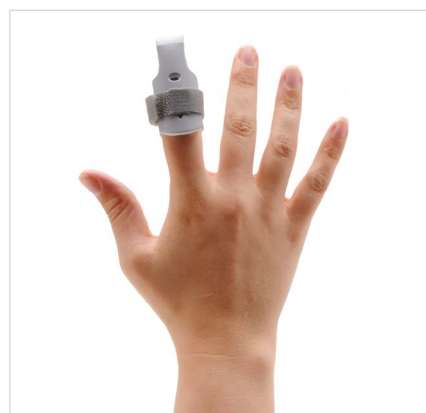
FINGER IMMOBILISER

Finger immobilising splint offering protection and immobilisation of the finger. Lightweight, comfortable and simple to fit.

Immobilises and stabilises the interphalangeal joints of the fingers. Often used by sportsmen and women who've sustained finger injuries or post surgery. Fits all fingers, left and right hand.

Indications for use:

Finger fractures, post finger surgery, finger protection.



Size	Mid Joint Finger Circ (cm)	Product Code
Small	Up to 5.5	940/S
Medium	5.5 - 7	940/M
Large	7 - 8	940/L
X-Large	9+	940/XL



CMC THUMB BRACE

Support and comfort for the first CMC joint. Keeps the thumb in the functional position.

Relieves pain and reduces the symptoms of loss of strength.

Indications for use:

Osteoarthritis of the first CMC joint. Post-surgical treatment of the first CMC joint. Arthroplasty of the first CMC joint. Instability of the first CMC



Size	Hand Circ (cm)	Right	Left	Fitting Guide
S/1	16 - 19	M780D/1	M780I/1	
M/2	19 - 23	M780D/2	M780I/2	
L/3	23 - 26	M780D/3	M780I/3	



UNIVERSAL WRAPAROUND KNEE SUPPORT

One size fits all, bilateral wraparound design knee support.

Support completely opens out for easy application, offering compression, support and stability. Made from three layer breathable elastic material with plush interior lining for enhanced comfort.

Features silicone grips to prevent support from slipping and an open patella for ease of movement.

Incorporates medio-lateral straps with grip tabs for easy closure and adjustment.

Size	Colour	Product Code
Universal	Black	7119
Universal	Beige	6119



FUNCTIONAL 4-POINT KNEE BRACE

Anatomical design that adapts perfectly to the knee joint and contours of the leg. Innovative frame made from a special aluminium alloy, light and stable, easily shaped and finished in matt black.

Easy-to-fit adjustable foam strap system to enhance comfort and prevent rotation whilst fitting. Features flat polycentric joints which can be set as desired using wedges included. Extension: 0°, 10°, 20°, 30°, 40°. Flexion: 45°, 60°, 75°, 90°, Immobilisation: 0°, 10°, 20°, 30°

Anti-slip skin friendly interior padding secured with flat welded press-studs for secure positioning. Can also be removed for cleaning.

Indications for use:

Instabilities and ruptures of ACL, MCL, LCL, PCL. Pre/Post-operative therapy and rehab. Protection of ligaments during sport.

*Thigh Circ. to be taken 15cm above mid-patella (cm)

Size	Thigh Circ (cm)	Length (cm)	Product Code Left	Product Code Right
Small	39 - 47	40	9540/L/S	9540/R/S
Medium	47 - 53	40	9540/L/M	9540/R/M
Large	53 - 60	40	9540/L/L	9540/R/L
X-Large	60 - 67	40	9540/L/XL	9540/R/XL
2X-Large	67 - 75	40	9540/L/2XL	9540/R/2XL



GEL ACHILLES & DORSAL SLEEVE

Lightweight pull-on design elasticated sleeve which fits left and right foot. Two gel cushioning pads protect the top of the foot and supports the Achilles region.

Relieves pressure and friction, suitably used to enhance comfort with all footwear. Reusable and washable.

Indications for use:

Achilles Tendinitis, fatigue, prevention of friction & abrasion, post surgery,

Size	Product Code
Small/Medium	G7322/S
Large/X-Large	G7322/L



ACHILLOSIL SUPPORT

Pull-on elastic ankle support with Achilles Tendon gel pads positioned to offer maximum relief to Achilles Tendon region. Features a dual pad that encapsulates and relieves strain on the Achilles tendon, guiding it when the ankle moves during activities such as walking and sport.

Also includes a pair of silicone heel cushions for maximum Achilles tendon strain relief. Made from breathable flat-knit elastic fabric with anatomical design.

Supplied to NHS for prevention and treatment of conditions that affect the Achilles tendon.

Indications for use:

Achilles tendonitis, Haglund's syndrome. Retrocalcaneal bursitis, Achilles tear, Post-operative achillodynia.

Size	Ankle Circ (cm)	Product Code
X-Small	17 - 19	9402/XS1
Small	19 - 21	9402/S2
Medium	21 - 23	9402/M3
Large	23 - 25	9402/L4
X-Large	25 - 27	9402/XL5
2X-Large	27 - 29	9402/2XL6



GEL TOE SEPARATOR

Half-moon separator made with nontoxic, hypoallergenic, dermatologically-tested, viscoelastic polymer gel that does not permit bacterial growth.

Simple and comfortable to position, easily accommodated in footwear. Available in three different size versions.

Supplied to NHS Podiatry.

Indications for use:

Prevention of toe friction, abrasion and irritation, and help to maintain

Size	Product Code
Small	G712/S
Medium	G712/M
Large	G712/L



GEL FOOT COVER

Lightweight and discreet foot cover which wraps a cushioning and protective layer of gel around both the toes and the ball of foot area.

Slim design enables easy accommodation in everyday footwear, simply position toes inside the gel cover to be worn against the skin with sock worn over the top.

Fits left or right foot and universally sized. Not suitable for swollen feet, hand washable and sold as a pair.

Indications for use:

Toe protection and comfort, retention of body temperature in the toes, comforts and relieves symptoms in individuals suffering from arthritis,

Size	Shoe Size (UK)	Product Code
Universal Pair	4 - 11	G7356/UNI



*Sold as a pair

LINED SILICONE HEEL WEDGE

Medical grade dual density viscoelastic silicone wedge 10mm in depth with non-slip fabric top cover.

Designed to protect and reduce friction at the heel region of the foot.

Indications for use:

Heel raise, achilles tendonitis, plantar fasciitis, achilles tendon rupture.

Size	Shoe Size (UK)	Product Code
Small	4 - 5	141/10/S/L
Medium	6 - 7	142/10/M/L
Large	7 - 8	143/10/L/L
X-Large	9 - 10	144/10/XL/L



*Sold as a pair

3 LAYER HEEL ELEVATOR (3-9MM)

3 layers of firm density EVA foam with an adhesive coating between each layer, finished with a non-slip fabric top cover.

Adjustable by peeling away layers from underside offering 9mm maximum heel raise reducing in equal decrements.

Indications for use:

Leg-length discrepancies, achilles tendonitis, plantar fasciitis.

Size	Shoe Size (UK)	Product Code
Small	3 - 6	BX/HE3/S
Medium	6 - 9	BX/HE3/M
Large	9 - 12	BX/HE3/L



*Sold as a pair

LINED SILICONE HEEL CUP

Medical grade dual density heel cup with non-slip fabric top cover. Provides enhanced comfort to heel region of the foot whilst standing, walking or running.

Indications for use:

Heel spurs, plantar fasciitis, haglunds heel.

Size	Shoe Size (UK)	Product Code
Small	4 - 5	122/SH/L
Medium	6 - 7	123/SH/L
Large	7 - 8	124/SH/L
X-Large	9 - 10	125/SH/L



*Sold as a pair

LINED SILICONE FULL LENGTH INSOLE

Medical grade dual density viscoelastic silicone insole with non-slip fabric top cover.

Slim and lightweight design to be non-bulky and easily accommodated in footwear. Provides attenuation of full foot impact shock.

Indications for use:

Talagia, bursitis, metatarsalgia, calcaneus spur, plantar fasciitis, diabetic foot, foot fatigue.

Size	Shoe Size (UK)	Product Code
X-Small	Up to 2	103/FF/L
Small	3 - 4	104/FF/L
Medium	5 - 6	105/FF/L
Large	7 - 8	106/FF/L
X-Large	8 - 9	107/FF/L
2X-Large	9 - 11	108/FF/L

ORTHOTIX

SPORTS & ORTHOPAEDIC BRACING

Supporting your wellbeing

WWW.ORTHOTIX.CO.UK

SANATORIUM ROAD, CANTON, CARDIFF, CF11 8DG
T: 029 2037 0696 | E: ENQUIRIES@ORTHOTIX.CO.UK

FOLLOW US ON:

